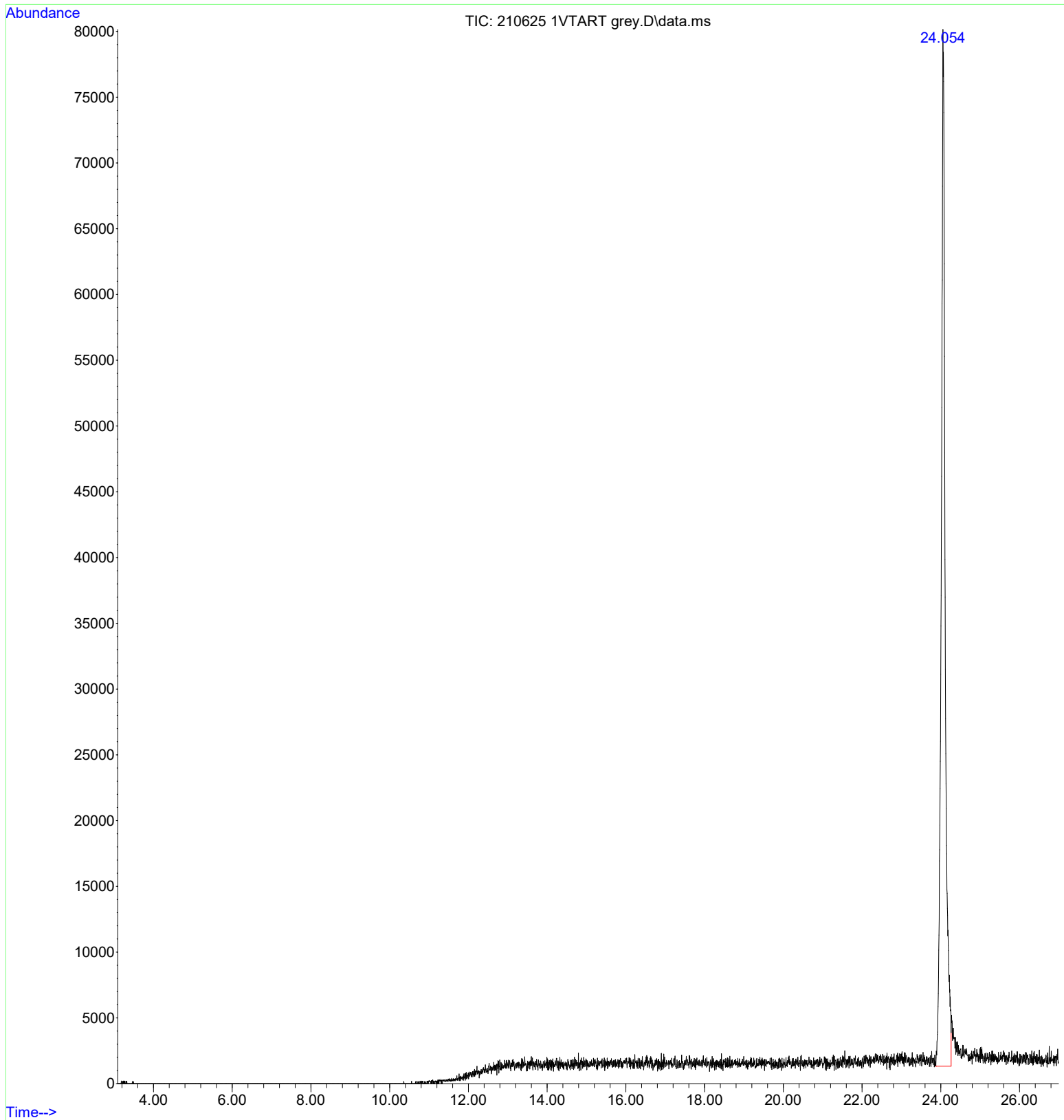


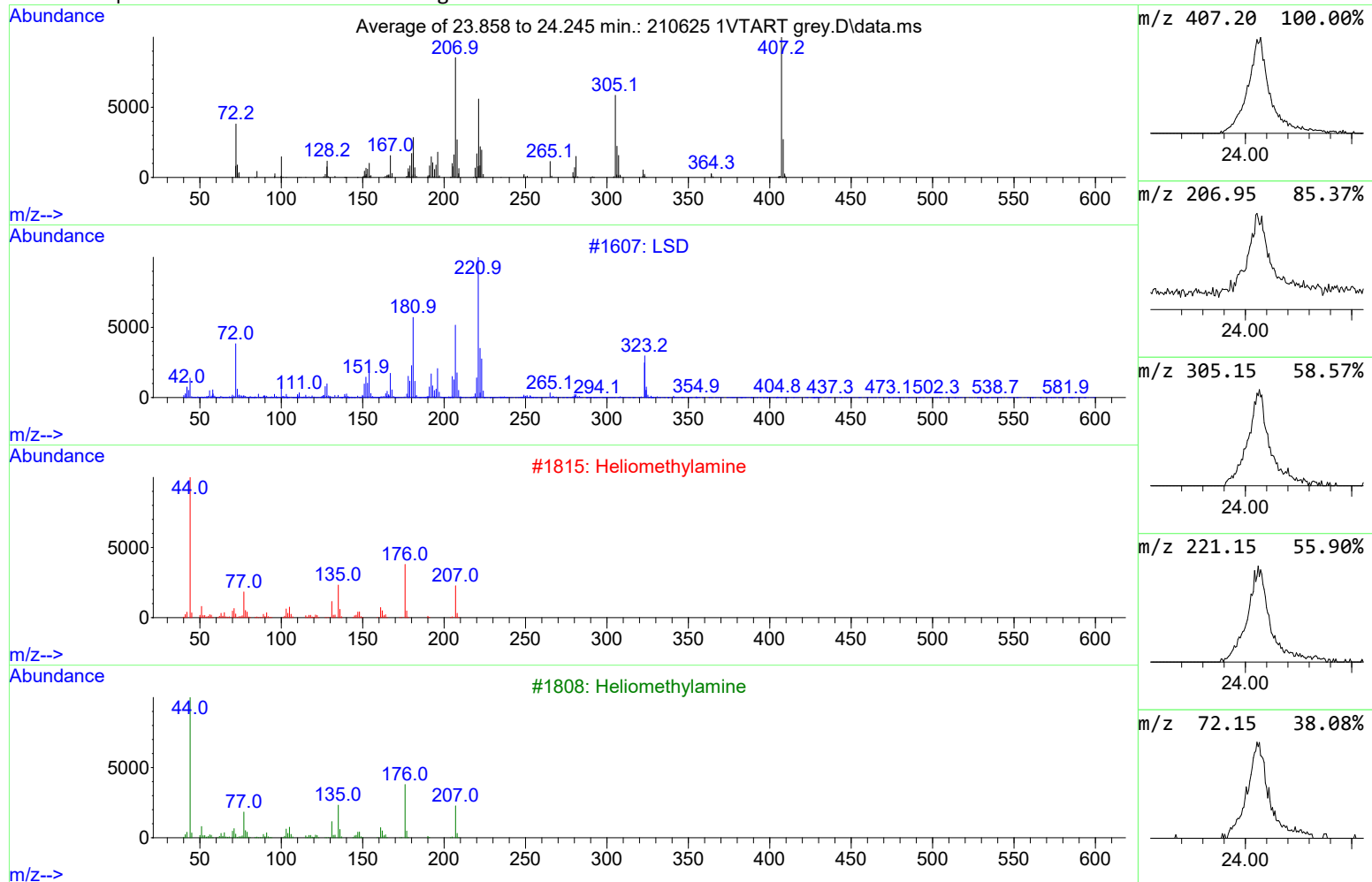
Data Path : D:\MassHunter\GCMS\1\data\  
Data File : 210625 1VTART grey.D  
Acq On : 25 Jun 2021 13:01  
Operator : SID  
Sample :  
Misc :  
ALS Vial : 1 Sample Multiplier: 1

Search Libraries: D:\MassHunter\...ectralLibrary.L Minimum Quality: 80  
D:\MassHunter\...SWGDRUG V3.4.L Minimum Quality: 70  
D:\MassHunter\...y\SWGDRUG 3.8.L

Unknown Spectrum: Peak average  
Integration Events: RTE Integrator - events.e



## Unknown Spectrum based on Peak average



Data File: D:\MassHunter\GCMS\1\data\210625 1VTART grey.D

Sample :

Peak Number: 1 at 24.054 min Area: 559820 Area % 100.00

The 3 best hits from each library.

Ref\# CAS\# Qual

D:\MassHunter\Library\CaymanSpectralLibrary.L

1	LSD	1607	032426-57-6	22
2	Despropionyl meta-Fluorofentanyl	1262	416881-38-4	1

D:\MassHunter\Library\SWGDRUG V3.4.L

1	Heliomethylamine	1815	000000-00-0	2
2	Cyclobarbital	396	000052-31-3	1
3	3,4-Methylenedioxy-3-methylamino...	2344	000000-00-0	1

D:\MassHunter\Library\SWGDRUG 3.8.L

1	Heliomethylamine	1808	000000-00-0	2
2	Cyclobarbital	393	000052-31-3	1
3	3,4-Methylenedioxy-3-methylamino...	2336	108248-08-4	1

Area Percent Report

Data Path : D:\MassHunter\GCMS\1\data\  
Data File : 210625 1VTART grey.D  
Acq On : 25 Jun 2021 13:01  
Operator : SID  
Sample :  
Misc :  
ALS Vial : 1 Sample Multiplier: 1

Integration Parameters: rteint.p  
Integrator: RTE  
Smoothing : ON Filtering: 5  
Sampling : 1 Min Area: 1 % of largest Peak  
Start Thrs: 0.2 Max Peaks: 100  
Stop Thrs : 0 Peak Location: TOP

If leading or trailing edge < 100 prefer < Baseline drop else tangent >  
Peak separation: 5

Method :  
Title :

Signal : TIC: 210625 1VTART grey.D\data.ms

peak #	R.T. min	first scan	max scan	last scan	PK TY	peak height	corr. area	corr. % max.	% of total
1	24.054	3702	3734	3771	rBV7	78816	559820	100.00%	100.000%

Sum of corrected areas: 559820

Sat Jul 03 13:35:43 2021

